



## Description

Come on in, Y'all! Serve the most popular sushi to the customers!! And guess the most popular one from the remaining pieces! If your order is the most popular one, serve the tea quickly!  
Action game with deduction! Be the number one sushi chef!

## Components

Sushi Tuna - 4 pieces, Sushi Sea Urchins - 4 pieces  
Tuna Roll -- 4 pieces, Agari (Green Tea) - 4 pieces  
Wooden Plate - 4 pieces



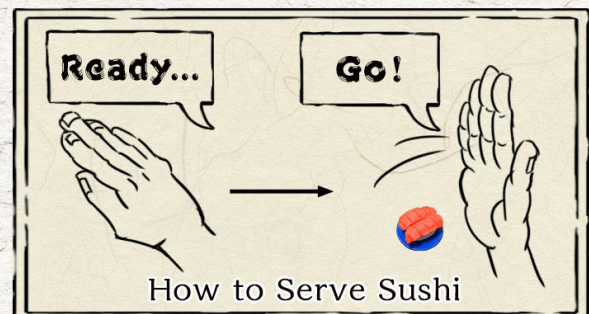
## Preparation for opening the store \*Game set up

- ① Each player gets one plate and one piece of each sushi (tuna, sea urchin, tuna roll).
- ② Each player keeps each sushi hidden in his/her hand.
- ③ Agari are gathered together and placed on the edge of the play area as a stack of Agari.
- ④ Take one Agari from the stack and place it in the center of the play area.



## Opening day!! \*Start the game

1. Each player chooses a piece of sushi from his or her hand and hides it in his or her hand.
2. Place your hands on the table with the sushi hidden.
3. After everyone has put out their hands, call out. "Ready" This is where the timing comes in. "Go!" and everyone opens their hands at the same time.



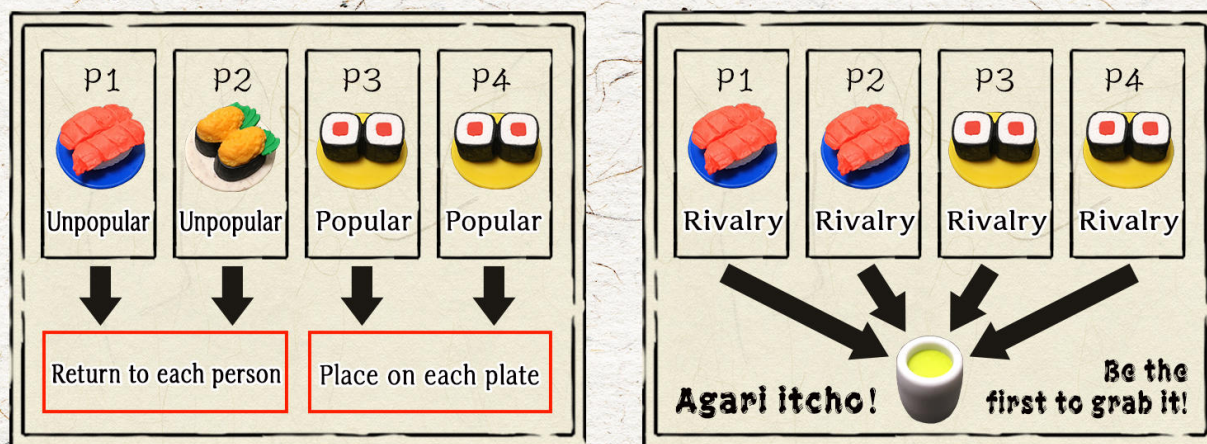


4. Check the sushi that everyone served.

- ① If the sushi you served was the most popular sushi, your sushi will be eaten by the customer. The eaten sushi is placed on your Wooden plate.
- ② If the sushi you served was not the most popular sushi, Your sushi will not be eaten by the customer. Return the sushi you were making to your hand.
- ③ If the most popular sushi are tied, or if you have two pieces of sushi on your Plate, call out "Agari itcho!" At that same time, grab the Agari from the center of the play area. You must try grab it before anyone else. If you grab it, place the Agari on your Plate and put a new Agari in the center. Each player then re-hides all three of his or her sushi in his or her hand.



<Example of an open hand>



5. Each player counts the number of Agari on each Plate.

- ① When you have 2 pieces of Agari  
You are the number one sushi chef of the day! \*You have won!
- ② When each player has one Agari.  
Return all the Agari to the stack. Repeat the process from the beginning.
- ③ In other cases  
Repeat the process from Step 1.

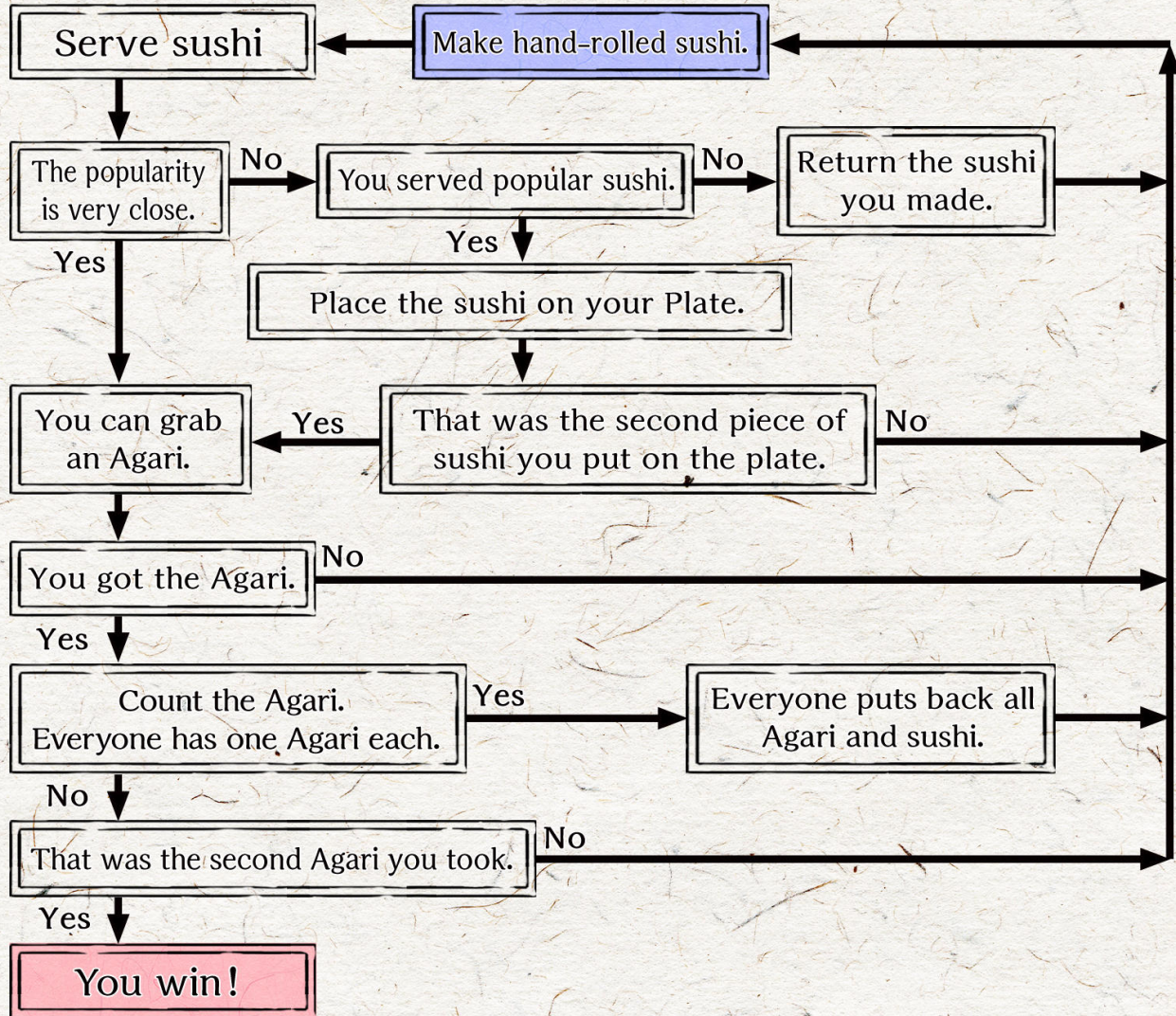
6. There are penalties for those actions below, and the same goes for breach of etiquette.

- ① Taking an Agari when you should not have.
- ② Taken an Agari without calling out (Agari itcho!)
- ③ Obviously, the timing of the call "Ready Go!" was off.
- ④ Forgetting to plate the second piece of sushi and taking the Agari.
- ⑤ Failed to serve sushi in timely manner.

The penalty for the breach is one "time off". You cannot join the next round.



## Flow chart



**Toshusai Sharaku**

Oniji Otani III's Edohei



**Toshusai Sharaku**

Ichikawa Ebizo's Sadahoshin Takemura

=Source of Ukiyoe=



**Katsushika Hokusai**

Thirty-six Views of Mount Fuji  
Kanagawa-Oki Namiura



**Utamaro Kitagawa**

Ten Pieces of Women's Physiognomy  
Woman blowing a poppin



**Utamaro Kitagawa**

Five beauties in a beauty contest  
Yatsuyama Washiya

Game Production  
**Gottani Co.,ltd.**  
**GOTTA2 GAMES**

Game design  
**Baronu(Kazutaka Yanagawa)**

Art  
**ROD(Yugo Katsumata)**

Release date  
1st edition Nov 20, 2021  
2nd edition Jun 18, 2022

Web site  
<https://gotta2.jp>

Email address  
[contact@gotta2.jp](mailto:contact@gotta2.jp)

Cooperative company  
**Iwako Co.,ltd.**  
**Sineisya Co.,ltd.**  
**Printpac Co.,ltd.**  
**Komagatamokko Co.,ltd.**



**MADE IN JAPAN**